

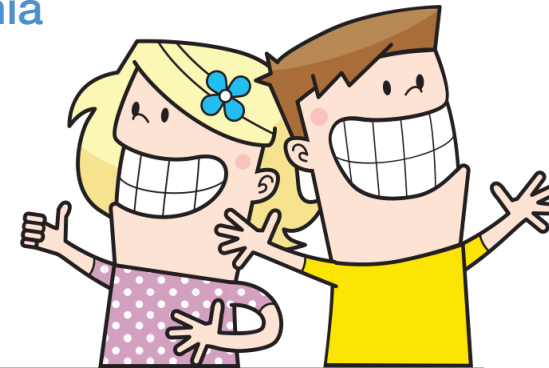
LM-Activator™ Virtual Course in Spring 2024

Lecturers: Dr. Gioacchino Pellegrino, Italy and Dr. Stefania Dinu, Romania

How to Treat Malocclusions Early with LM-Activator™ Eruption Guidance Appliance
a Clinical Approach with Theoretical Framework

LM

feel the difference



COURSE PROGRAM

Webinar videos for self-learning

Webinar videos 1-4 to be watched independently, read research articles links in the eLearning platform

Interactive meetings

Interactive meeting 1

May 8th 2024 at 18.00-20.00 GMT +3:00
Management of Deep bite with LM-Activator™

- Welcome and introduction
- Presentation of course structure and learning objectives
- Treatment of Deep bite with LM-Activator™
 - Theoretical background
 - General treatment objectives/philosophy
 - Appliance demonstration
 - Key considerations on using LM-Activator™
 - Why & When LM-Activator™ for Deep bite
- Patient Cases
 - Case explanation
 - Diagnosis
 - Treatment planning and key steps
- Q & A

Interactive meeting 2

May 16th 2024 at 18.00-20.00 GMT +3:00
Correction of Open bite with LM-Activator™

- Short introduction
- Treatment of Open bite with LM-Activator™
 - Theoretical background
 - General treatment objectives/philosophy
 - Appliance demonstration
 - Key considerations on using LM-Activator™
 - Why & When LM-Activator™ for Open bite
- Patient Cases
 - Case explanation
 - Diagnosis
 - Treatment planning and key steps
- Summary of the main learnings
- Q & A



Exercises and videos at Planmeca eLearning platform

Exercise Part 1 - Early treatment & 2 - Deep Bite

Clinical Exercise 1, 2 and 3

Videos: Interview w patients & parents, Deep bite with LM-Activator

Exercise Part 3 - Open Bite

Clinical Exercise 4

Videos: Selecting the right size and fit of LM-Activator for a patient, How to get started

LM-Dental™ reserves the right to make changes.